

# Small stream LiDAR bathymetry potential



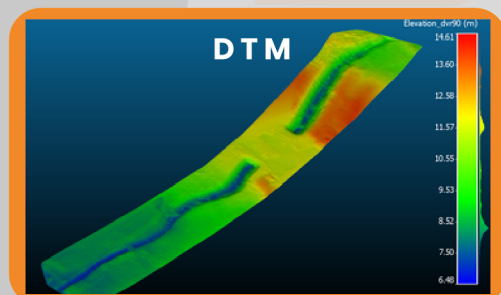
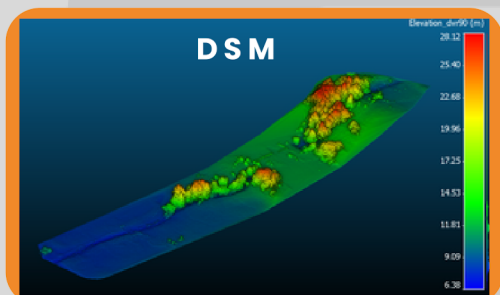
## EXECUTIVE SUMMARY

- LiDAR has the potential to be used for measuring the depths of relatively shallow waters from the air. On the right image there is an overview of a stream with a small water height and overhanging vegetation.



## PENETRATION THROUGH VEGETATION

- The Digital Surface Model of the area is presented. The terrain/bathymetry as well as low and higher vegetation are visible. After classifying the model to ground and non-ground, the Digital Terrain Model can be exported for future data processing.



## POINT CLOUD SECTIONS

- A small part of the area is illustrated. This shows the potential to extract the full bathymetry including rocks and other large objects in the water column. In addition, extracted cross sections along the stream's centerline direction are presented. Each section (6 in total) covers an area of 1 meter along track and 15 meters wide. This can be very useful for more detailed analysis.

